

RESEARCH ETHICS

Potentiality of embryonic stem cells: an ethical problem even with alternative stem cell sources

H-W Denker

J Med Ethics 2006;**32**:665–671. doi: 10.1136/jme.2005.014738

The recent discussions about alternative sources of human embryonic stem cells (White Paper of the US President's Council on Bioethics, 2005), while stirring new interest in the developmental potential of the various abnormal embryos or constructs proposed as such sources, also raise questions about the potential of the derived embryonic stem cells. The data on the developmental potential of embryonic stem cells that seem relevant for ethical considerations and aspects of patentability are discussed. Particular attention is paid to the meaning of "totipotency, omnipotency and pluripotency" as illustrated by a comparison of the developmental potential of three-dimensional clusters of blastomeres (morula), embryonic stem cells, somatic or (adult) stem cells or other somatic (non-stem) cells. This paper focuses on embryoid bodies and on direct cloning by tetraploid complementation. Usage and patenting of these cells cannot be considered to be ethically sound as long as totipotency and tetraploid complementability of embryonic stem cells are not excluded for the specific cell line in question. Testing this poses an ethical problem in itself and needs to be discussed in the future.

be chosen to produce human embryonic stem cells, thus circumventing and avoiding the use of normal human embryos (potential human beings who could otherwise have been allowed to develop after embryo transfer to a uterus). The various new sources for embryonic stem cell production that are discussed in the White Paper are not the main topic of this article.¹

The point that I would like to discuss here is that this White Paper, in contemplating the ethical aspects of these various procedures, clearly asks for a clarification and evaluation of the developmental potential of the constructs in every case (artefacts, atypical or pathological embryos or embryo surrogates). Should there be reason to believe, after such evaluation, that these alternative sources of cells or their descendants have to be considered to be developmentally equivalent to a normal human embryo, the authors of the White Paper would see an ethical problem (citation: "... ethically unproblematic and acceptable for use in humans ... provided the line between pluripotency and totipotency can be maintained" ², p 59). Interestingly, it seems that this view is in agreement with the arguments mentioned above^{3–5} and calls for a careful and detailed discussion of the aspect of developmental potentiality of the cells we are dealing with. As we will see, this will lead to conclusions on ethical acceptability and patentability that are somewhat different from what the White Paper proposes.

POTENTIALITY AS APPLIED TO MORULAE AND VARIOUS OTHER TYPES OF CELL CLUSTERS

In the public ethics debate on the use of early human embryos, the inner cell mass (embryoblast) of a blastocyst (the usual starting point for the production of embryonic stem cells) is very often termed "just a cluster of cells", as is a

The continuing debates about the ethical aspects of research on human embryonic stem cells are primarily nourished by the unsolved problem that early embryos need to be sacrificed to produce such cell lines, and that, across all traditions and beliefs, people are divided on the question of whether the promise of considerable therapeutic breakthroughs can be weighed against the ethical problem connected with the destruction of early human life.^{1,2} Embryo destruction is, however, not the only ethical problem that must be seen here. As pointed out earlier, although mostly not discussed in the broader public, the developmental potential that is a basic characteristic of embryonic stem cells must be seen as an additional problem of its own and should even be considered the more challenging problem.^{3–5} It becomes clear when reading carefully through the recently published White Paper of The President's Council on Bioethics,⁶ that this is probably even more complex and more difficult to deal with than the problem of embryo destruction.

The aim of the White Paper is to discuss publicly several alternative procedures that may

¹(comprising (i) "organismically dead embryos", 6–8-celled IVF embryos that ceased dividing; (ii) blastomeres obtained by non-harmful biopsy of living embryos; (iii) "biological artifacts", genetically modified cells/embryos lacking certain properties needed for early development or implantation (eg, a gene that is necessary for trophoblast differentiation), but which may later be reactivated after embryonic stem cell production (method: eg, "altered nuclear transfer" to an oocyte); (iv) reprogramming human somatic cells, for example with the aid of special cytoplasmic factors obtained from oocytes).

Abbreviations: EMT, epithelial–mesenchymal transition; SSC, somatic stem cell

Correspondence to:
H-W Denker, Institut fuer
Anatomie, Lehrstuhl fuer
Anatomie und
Entwicklungsbiologie,
Universitaetsklinikum
Essen, Hufelandstr. 55,
45122 Essen, Germany;
denker@uni-essen.de

Received 13 October 2005
Revised 27 March 2006
Accepted 6 April 2006

morula. Embryologists, however, are still divided on the question of whether a morula or the inner cell mass consists of a homogeneous population of cells with equal developmental information or whether there is any cryptic spatial information embedded in this cluster. Specifically, the question is whether cell differentiation and embryonic pattern formation (embryoblast *v* trophoblast, primary endoderm and axes, such as the embryonic–abembryonic axis and later the main body axes) depend simply on the position of cells in the cluster (inside–outside hypothesis), on interaction with the environment (eg, the uterus) or on pre-patterns derived from the zygote (reviewed in Denker⁷). Recent evidence suggests that a pre-pattern in the sense of developmentally marked asymmetries does exist and that axial information derived from the zygote and maintained through cleavage does have an important role here. Hence there is a need to view morulae and blastocysts as having pre-patterns that are relevant for future embryonic axes.^{8–9} It seems logical to assume that such axis-specifying pre-patterns (asymmetries) are lost when embryos are disaggregated to form embryonic stem cells and when these cells are continuously disaggregated during subculturing. It is reasonable to ascribe organism wholeness to morulae and blastocysts and to assume that this organismicity is lost in the course of these procedures (“organism death”, in the terminology of the White Paper⁶ applied, egg, to defective morulae with many degenerating blastocysts). The question remains as to whether the ensuing embryonic stem cells have properties that force us to regard them as cells that are nevertheless so close to early embryos that they deserve special protection with regard to potentiality and exceptional treatment on ethical questions and patent ability, which I believe is the case and which I will try to explain later.

We can base our discussion of the ethical aspects of potentiality on certain embryological facts already established and generally accepted. For the sake of simplicity I propose to discuss four different “clusters” of cells:

- (a) a morula
- (b) a cluster of embryonic stem cells
- (c) a cluster of somatic (adult) stem cells (SSCs)
- (d) a cluster of other somatic (non-stem) cells.

Are there reasons to regard, with respect to potentiality and ethical aspects, a morula as being equally distinct from a colony of embryonic stem cells as from any somatic stem cells or any group of cells in the body?

Before we look more deeply into this matter, we should deal briefly with two principal objections against such a discussion, which can be found in the literature, in particular with respect to totipotency. Some would argue that there is no point whatsoever in discussing these potentialities because the criteria of developmental potential are believed to be of no help in the ethics debate, as any cell nucleus of the body can be considered to be totipotent in the sense that it can support embryonic development if transferred to an (enucleated) oocyte or zygote (eg, Dolly, the sheep).¹⁰ We can deal with this objection briefly because it is incorrect. The nuclear transfer type of experiment shows reprogramming of the nucleus by the egg cytoplasm, but not cell potential. Developmental potential can be ascribed only to whole cells and depends on intricate interactions between the nucleus and cytoplasm. An argument sometimes heard in Germany (specifically making reference to the wording of the German Embryo Protection Law, Embryonenschutzgesetz) is that totipotency is of juridical or ethical relevance only if it is a property of a single cell (not a group of cells).¹¹ I propose to disregard this argument in the context of this discussion, as

Table 1 Proposed terminology: pluripotency, omnipotency and totipotency

Definition	Examples
<i>Pluripotency</i> Potential to generate many, but not all, types of differentiated cells	Somatic (adult) stem cells
<i>Omnipotency</i> (by some authors referred to as totipotency) Potential to generate all types of differentiated cells, but not necessarily also including potential for self-organisation (gastrulation and basic body plan)	Some embryonic stem cell lines (late passages?) Some somatic/adult stem cells?
<i>Totipotency</i> Omnipotency plus potential for self-organisation (gastrulation, basic body plan and individuation)	Zygote Blastomeres Embryoblast (early) Some embryonic stem cell lines (early passages?)

the real players in most developmental processes in higher animals including humans are cell groups, not single cells.

Returning to the four different clusters of cells mentioned earlier (morula, embryonic stem cells, SSC and non-stem cells), we ask, “Are there any differences between these clusters that may be relevant to potentiality and simultaneously to ethical aspects?” In doing so, we will concentrate on three-dimensional rather than two-dimensional test systems because embryos need to develop complex three-dimensionality (to acquire the ability to lead an independent life as an individual). Many of the inductive interactions that direct cell differentiation also need a three-dimensional cell arrangement (while planar, ie, two-dimensional patterning is more rare). This is worthy of mention because two-dimensional differentiation systems are most often used in embryonic stem cell research (eg, in the second phase of the embryonic stem cell test¹²). Two-dimensional systems may allow us to detect only the potential of cells to differentiate into various cell types and thus provide criteria for a judgement on pluripotency or omnipotency⁵ (table 1). Of primary ethical interest, however, is totipotency, defined as the ability to give rise to all cell types of the body (omnipotency) and also to initiate formation of a harmonious three-dimensional embryo that may finally acquire the ability to lead an independent life as an individual (given the proper environment for development). This necessarily involves early embryonic patterning processes culminating in the formation of a basic body plan by gastrulation.⁷

To focus on this ethically most relevant question about totipotency, I will therefore restrict the discussion to three-dimensional biological systems of testing:

- *Autonomous development*: the teratoma model (in vivo); embryoid bodies (in vitro).
- *Non-autonomous development*: tetraploid complementation.

TERATOMA FORMATION

When embryonic stem cells are transplanted to extrauterine (ectopic) sites they form teratomas, a specific type of tumour consisting of derivatives of all three germ layers.^{13–15} This tumour-forming potential can be a problem with respect to any use of embryonic stem cells in transplantation medicine and has thus received attention because so far it does not seem to be completely manageable.¹⁶ By contrast, with a

focus on totipotency, this teratoma-forming capacity of embryonic stem cells does not *prima facie* seem to provide any arguments that can be used in ethical considerations. A mature teratoma consists of various types of cells and tissues, but in a chaotic arrangement lacking the high structural order that is necessary for organismic wholeness and for the ability to lead an independent life as an individual. An impressive degree of self-structuring potential of the cells becomes obvious in teratomas, although not at the organismic level (basic body plan) but at the organ level (eg, formation of gut-like structures with fairly normal histological stratification and even a degree of functional autonomy^{17–18}). Teratoma formation thus does not seem to indicate that any processes of individuation occur in this situation. It is sometimes argued, therefore, that teratoma formation after embryonic stem cell transplantation even shows a lack of totipotency (in the sense of formation of a harmonious embryonic anlage) in embryonic stem cells. This reasoning, however, is logically incorrect: A teratoma develops also from normal embryos if these are transplanted to the same ectopic sites.^{14–15} This clearly shows that normal early embryonic pattern-formation processes are disturbed at these extra-uterine sites. The reason seems to be that early embryonic pattern-formation processes in mammals are very sensitive and need to be protected from, for example, non-physiological asymmetry cues from the environment.⁷ This is suggested by observations on twinning as well as on the disturbance of early embryonic pattern-formation processes observed when mouse embryos are kept in *in vitro* culture beyond the implantation stage.⁷

Teratomas (consisting of derivatives of all three germ layers) are thus formed after transplantation to extrauterine sites by embryonic stem cells and by early embryos; they are not reported to be formed by other (non-pluripotent) stem cells, nor by other somatic cells of the body (table 2). Although this is a remarkable similarity between embryonic stem cells and early embryos that sets them apart from other types of cells, teratoma formation by itself does not provide any arguments for or against any totipotency that these cells may possess.

EMBRYOID BODY FORMATION

When embryonic stem cells are cultured *in vitro* as three-dimensional aggregates (either free floating or only loosely attached to a substratum), they can form morphologically complex structures called embryoid bodies. This term was originally coined specifically for the mouse system in which these structures closely resemble the core structure of a postimplantation embryo morphologically at the egg cylinder stage (for a morphological illustration highlighting the similarities see Denker^{7–19}). Typical embryoid bodies in the

mouse consist of epiblast (the primary epithelium which gives rise to the entire body of the embryo proper through formation of the three germ layers, ectoderm, definitive endoderm and mesoderm, at gastrulation), a central cavity (equivalent to the proamniotic cavity) and an outer epithelium (hypoblast/primitive endoderm). Embryoid bodies in the mouse lack trophoblast and parietal endoderm (ie, extraembryonic tissues that make up the main part of the placenta and the yolk sac, respectively), in contrast with embryoid bodies in primates (see later). By extrapolating from the mouse to the human, it has been argued repeatedly by some authors (particularly in Germany) that embryoid bodies in humans cannot be considered to be totipotent structures because trophoblast is needed, for example, for implantation and placentation. This argument cannot be sustained, however, owing to the fact that embryonic stem cells in primates (including human) have a pronounced potential to differentiate trophoblast (in contrast with the embryonic stem cells in the mouse).^{7–20–21}

Primate embryos (non-human and human) have a different morphology from the mouse at equivalent stages, with no egg cylinder but a flat embryonic disc. To be really embryo-like, an embryoid body would, therefore, more or less have to resemble this type of structure and, for purely physical reasons, we would expect it to form with higher probability in flat (although somewhat three-dimensional) cultures than in free-floating spheroidal cell aggregates, as in the mouse. For this reason the fact that formation of embryonic anlagen has not been observed when human embryonic stem cells were cultured as spheroids²² does not provide a fair argument in the sense that it would demonstrate lack of embryo-forming potential (totipotency). In fact, structures closely resembling embryonic anlagen of early postimplantation stages have been described as forming in flat dense cultures of embryonic stem cells in the marmoset.²³ These structures were astonishingly similar to early primate (eg, human) postimplantation stage embryos (for an illustration, see fig 2 in Denker⁷). Even an amnion and a yolk sac equivalent were found and, most remarkably, in the middle of the epiblast equivalent, a structure with a primitive streak-like morphology was seen and was interpreted as such by those authors. This meant that processes of definitive germ layer formation and individuation seemed to be occurring. Unfortunately, marmoset embryonic stem cells were not available internationally during the subsequent years, and these interesting observations could not be repeated until now; it was only very recently that new embryonic stem cell lines in the marmoset were developed by another group.²⁴

Literature on embryonic stem cells from other non-human primate species or humans does not report on the formation of differentiated stem cell colonies (or embryoid body equivalents) that would morphologically resemble early postimplantation stage embryos closely. As mentioned earlier, this could be because the three-dimensional culture systems used are mostly not appropriate for formation of a flat embryonic disc as typical for human or primate embryos. Apart from this, it seems possible that differences exist between cell lines with respect to the early embryonic pattern-formation potential.²⁶ This may be because epigenetic peculiarities arise in an unpredictable way and to an uncertain extent during *in vitro* culture.^{27–28} In my opinion, it would not be defensible to carry out studies with embryonic stem cell lines in humans with the aim of choosing *in vitro* culture conditions that may allow these cells to develop early embryonic anlagen comparable to those of the marmoset. I agree with Pera²⁹ that “if such structures were observed in cultures of human ES cells, there would be justified reason for concern, since such an entity might bear a

Table 2 Summary of the main aspects of developmental potential discussed in this paper				
	Morula	Cluster of embryonic stem cells	Cluster of somatic (adult) stem cells	Cluster of other somatic (non-stem) cells
Teratoma formation	+	+	–	–
Embryoid body formation	+	+	–	–
Tetraploid complementation	+	+	–	–

+, potential present; –, potential absent.

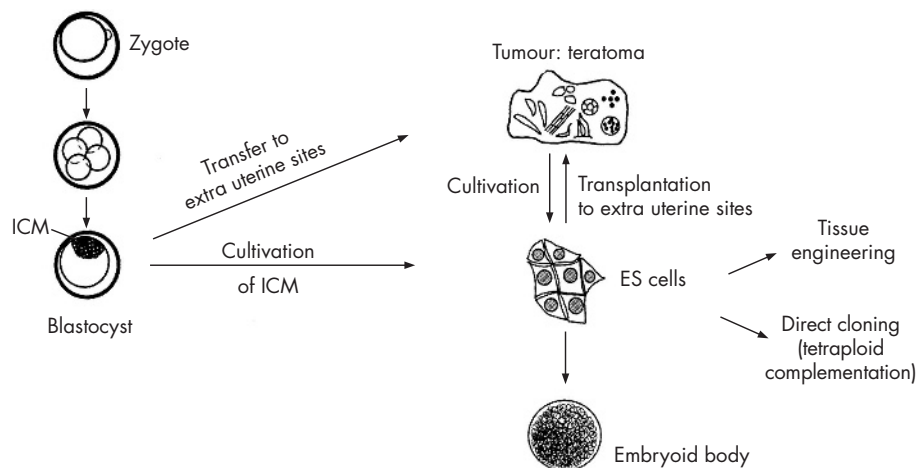


Figure 1 Differentiation potential of embryonic stem (ES) cells. ICM, inner cell mass (modified after Rohwedel *et al*²⁵).

very close resemblance to the embryo near the 14-day limit for observation *in vitro*.^{3,4}

My group has recently carried out investigations on differentiating colonies of embryonic stem cell lines in the rhesus monkey (line R366.4). That particular cell line had originally not been reported to form *in vitro* any embryonic structures resembling postimplantation stages such as embryonic stem cells in the marmoset.³⁰ We basically confirmed this with respect to lack of formation of an amnion or a yolk sac equivalent.³¹ What we saw, however, was the transient formation of an epithelial disc that often developed a central depression in these colonies, and mostly only one such structure. Here, the epiblast-like embryonic stem cell layer seemed to undergo an epithelial-mesenchymal transition (EMT) as in a primitive streak, accompanied by the typical down regulation of macromolecules and junctions of epithelial cells (E-cadherin, 20-1, tight junctions and the epiblast marker Cx43). In parallel, the colonies markedly increased transcription of *Snail2*, a central regulator of EMT processes. All of this suggests that what we observed in these colonies is the spontaneous initiation of processes that occur during gastrulation in mammalian embryos. The central depression in these colonies was wide; it was not narrow like a real primitive streak, nor elongated

or excentrically located. Hence, these colonies obviously had no positional cues like those that define the anterior-posterior (cranio-caudal) axis of a primate embryonic disc. Also of interest in these observations was that all cells of these colonies (not only those in the central depression) expressed high levels of the genes *brachyury* and *goosecoid*. As these two genes are markers for those epiblast cells of an embryo that are in the process of primitive streak and mesoderm formation, we may conclude these particular embryonic stem cells are already triggered from the start of colony formation on to initiate EMT and a gastrulation-like process. However, in the culture system used (which included mouse feeder cells), however, the overall morphology did not come very close to that of a primitive streak—that is, the gastrulation stage of a real embryo.

Gastrulation is of utmost importance not only for formation of the definitive germ layers but also of one of the main body axes, the anterior-posterior axis, and the basic body plan.⁷ The molecular and cellular biology of gastrulation is the centre of interest of developmental biologists and much progress has been made recently.³² Classical experiments on the germinal disc of the chick and modern molecular approaches in mammals and the zebrafish show that the induction of organiser equivalents and the formation of

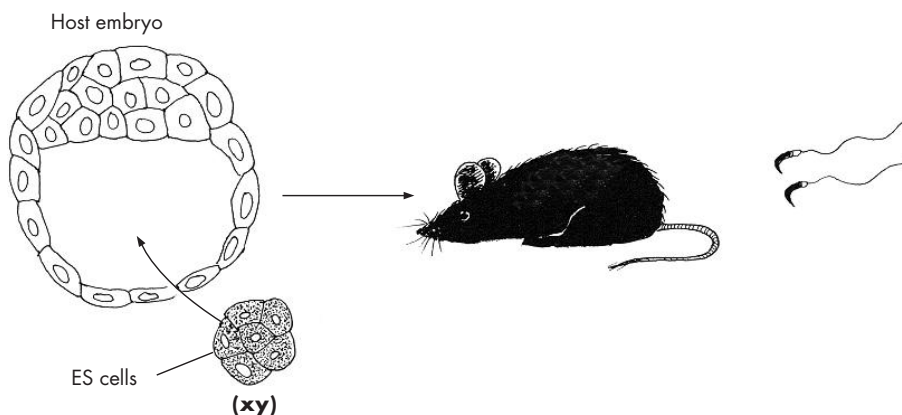


Figure 2 Tetraploid complementation allows highly efficient direct cloning of normal mice (including a normal germ line, symbolised by sperm) from embryonic stem cell lines in one step. The embryonic stem cells are combined with manipulated (tetraploid) host cells (blastomeres or, as shown here, a blastocyst) with restricted developmental potential (forming only extraembryonic cell types). Embryonic stem cells show in this case a remarkable developmental potential and form, after transfer to a uterus, the complete body of a mouse without direct participation of the host cells. (Modified from Denker¹⁹.)

primitive streaks and the anterior–posterior axis strongly depend on local asymmetries that can be disturbed easily and that respond in a very sensitive way even to non-specific physicochemical signals (reviewed in Denker⁷). Embryonic stem cells are thought to represent in vitro equivalents of embryonic disc (epiblast) cells and can thus be expected to maintain the ability of sheets of epiblast to respond to external (even stochastically arising) asymmetries by initiating the typical cascade of local gene activation events that lead to organiser and primitive streak formation. From the point of view of developmental biology, we should, therefore, not be too surprised about observations such as those reported by Thomson *et al*²³ on formation of a primitive streak-like structure in marmoset embryonic stem cell cultures, or the EMT processes in those of the rhesus monkey (see earlier). Lewis Wolpert coined the aphorism: “The most important event in your life is not birth, marriage, or death but gastrulation” (Stern³² Preface). The process of twinning (which occurs in humans most frequently at stages after formation of the blastocyst; for literature, see Denker⁷) may be one example of this. Gastrulation (primitive streak formation) marks (and is instrumental in) individuation. This is the reason for defining the 14th day of development as a limit for embryo experimentation in the UK. As our discussion focuses on ethics, it is relevant that, although embryonic stem cells show a gastrulation capacity, like early embryos, this has never been reported for any clusters of SSC or other somatic cells (table 2).

DIRECT CLONING BY TETRAPOID COMPLEMENTATION

Embryonic stem cells can form an entire, normal organism when combined with helper cells, either blastomeres from cleavage stages or blastocysts, that have been made tetraploid.^{33–34} This is a variant of the chimera formation technology, and the use of tetraploid (rather than normal diploid) helper embryos or cells restricts them to forming only extraembryonic cell types (such as placental trophoblast) and not contributing to the formation of the body of the resulting mouse. Tetraploid complementation is a technology that allows for cloning of mice in a one-step procedure and is being used worldwide in many laboratories. We have no reason to doubt that tetraploid complementation would also work with embryonic stem cells in humans if attempted. Although experiments in the mouse show that the efficiency of cloning by tetraploid complementation depends on the particular mouse strain from which the embryonic stem cells were derived, we must, by extrapolation, regard embryonic stem cells in humans basically as potential human beings as long as it has not been shown that the respective cell line cannot form an embryo by tetraploid complementation. The ethical dilemma is evident. Although there seems to be consensus worldwide at this moment that reproductive cloning of humans should be banned, opinions differ considerably on research cloning. Interestingly, Buddhist authorities are expressing a view that is quite opposite to what dominates in the Western world. Depending on the time point of ensoulment that they envisage, they would ban embryo destruction by therapeutic cloning but not reproductive cloning.³⁵ This alone shows that we cannot be sure about any worldwide consensus on the ban of reproductive cloning.

As embryonic stem cells in humans must thus be regarded as potential human beings (even though the efficiency of embryo formation by tetraploid complementation remains unproved for the individual cell line), they must also be considered principally non-patentable.^{36–37} This may be different for different embryonic stem cell lines, but testing this by performing a tetraploid complementation cannot be

an ethically acceptable way. The same considerations must apply for the biological “artifacts” proposed by Hurlbut³⁸ (see also The President’s Council on Bioethics⁶) and any embryonic stem cell lines derived from them.

What embryonic stem cells show when tetraploid complementation is carried out is of course aided (not autonomous) development. The exact role of the helper cells or embryos has not been clarified. They obviously provide for this construct trophoblast cells that are needed for implantation in the uterus, but they may also provide the necessary asymmetry cues for a regular formation of the body axes (gastrulation, primitive streak; for a discussion, see Denker⁷). We can argue whether tetraploid complementability shows totipotency or not (eg, only omnipotency; table 1). This will depend on whether we feel that it is sufficient for the definition of totipotency that the cells form the whole body of a normal individual including the germ line or whether we want to include the ability to also form the extraembryonic structures autonomously (placenta and yolk sac). (It should be noted in passing that non-human primate and human embryonic stem cells, in contrast with those in the mouse, can differentiate trophoblast by themselves^{5–7}). No matter how we may want to decide about this terminology, it seems to be a peculiarity of embryonic stem cells as compared with other cell types that they show this embryo-forming potential by tetraploid complementation. They seem to share this remarkable potential only with early embryonic cells but not with other cell types, including somatic or adult stem cells. No report exists in the literature about successful tetraploid complementation with somatic stem cells. Somatic stem cells can form chimeras when combined with normal (but not tetraploid) embryos and they then show their plasticity by contributing to the formation of various organs and tissues (the high plasticity reported in Clarke *et al*³⁹ has been debated by other groups⁴⁰ and seems to depend considerably on the cell type). The formation of a whole embryo or living animal from somatic stem cells by tetraploid complementation has not been reported in the literature and does not seem to be possible. The developmental potential of embryonic stem cells must thus be seen as categorically different from that of somatic stem cells or other somatic (non-stem) cells (table 2).

CONCLUSION

Embryonic stem cells, being embryoblast-like or epiblast-like cells, show a remarkable developmental potential that exceeds what is usually discussed (ie, the ability to form different cell types: pluripotency or omnipotency). They also have a potential for early embryonic pattern formation—that is, morphogenesis from an amorphous cell cluster by gastrulation to a basic body plan. This potential is shown to only a limited degree in vitro when the culturing conditions restrict orderly pattern-formation processes. (This is seen in the same way with normal embryos of implantation/postimplantation stages.) The fact that embryoid bodies are usually not much more than a caricature of normal embryos does not argue against the totipotency (in the sense of pattern-formation potential) of embryonic stem cells. Nevertheless, remarkable pattern-formation processes by embryonic stem cells in vitro have been shown in the marmoset²³ and, in a more limited way, in a rhesus monkey cell line.³¹ Far too little is known about embryonic stem cell lines in humans, possibly because these cell lines are usually not allowed to form differentiated flat colonies (as would be physiological for this species). Assisted development (with tetraploid helper cells added) shows, however, that at least mouse embryonic stem cells can form complete normal individuals, consisting exclusively of embryonic stem cell progeny, and this most probably also applies to human embryonic stem cells. This remarkable potential seems to be a

peculiarity of embryonic stem cells (table 2), which puts them close to embryonic cells up to the epiblast stage. The (at least theoretical) possibility of cloning human beings from embryonic stem cells in the one-step procedure of tetraploid complementation needs to be put into ethical considerations. It certainly must be seen as an obstacle for patenting human embryonic stem cells as long as the possibility of embryo formation by tetraploid complementation has not been disproved for the human embryonic stem cell line in question.³⁶ As embryonic stem cells can be propagated indefinitely and can thus be distributed worldwide and grow for long periods, the risk that they could theoretically also be used for reproductive cloning of human beings in an unforeseeable future must be included in the information given to patients when informed consent is obtained in the course of embryo donation.³⁷

When embryonic stem cells are compared with early embryos, with other (somatic/adult) stem cells or non-stem cells as regards totipotency (defined as the potential to form a viable individual), a remarkable property that embryonic stem cells are seen to have is their potential to develop a basic body plan and to acquire organismic wholeness if appropriate conditions are provided, and they seem to share this only with early embryos or the embryoblast or epiblast (primitive ectoderm) of those. These remarkable and peculiar properties should force us with respect to ethical considerations to regard embryonic stem cells as categorically, not just gradually, different from somatic stem cells or non-stem cells. Single embryonic stem cell lines may differ with respect to totipotency so defined. Biological tests of totipotency are ethically non-acceptable in humans (this would be reproductive or at least research cloning). With these aspects in mind, the use of any embryonic stem cell line in humans that is suspect of totipotency must be considered to be ethically problematical, and these cells must be regarded as non-patentable. Specifically, the ability to form a normal individual via tetraploid complementation (tetraploid complementability), although not showing autonomous totipotency but a sort of assisted development, must be regarded as problematical under ethical aspects and should indeed preclude patentability. These considerations must apply to any type of stem cells suspect of totipotency, no matter by what procedures they have been derived (including, eg, the "organismically dead embryos" as well as "biological artifacts", discussed in the White Paper of the US President's Council on Bioethics, 2005).⁶

ACKNOWLEDGEMENTS

This article is based on a lecture given at the workshop *Going to the roots of the stem cell controversy*, Norwegian Center for Stem Cell Research, Oslo, Norway 13–14 June 2005. I thank the recent and former members of my department who contributed to our own stem cell work, in particular Rüdiger Behr, Bärbel Gobs-Hevelke, Carola Heneweir, Hans-Peter Hohn, Birgit Maranca-Hüwel, Gudrun Mikus, Iris von Recklinghausen, Uwe Scheperjans, Dorothee Schünke, Michael Thie and my wife Ulrike Denker.

This work was supported by Kompetenznetzwerk Stammzellforschung NRW.

Competing interests: None.

REFERENCES

- Holm S. Embryonic stem cell research and the moral status of human embryos. *Reprod Biomed Online* 2005;10(Suppl 1):63–7.
- Heinemann T. Klonieren beim Menschen. *Analyse des Methodenspektrums und internationaler Vergleich der ethischen Bewertungskriterien*. Berlin: Walter de Gruyter, 2005.
- Denker H-W. Embryonic stem cells: an exciting field for basic research and tissue engineering, but also an ethical dilemma? *Cells Tissues Organs* 1999;165:246–9.
- Denker H-W. Embryonale Stammzellen und ihre ethische Wertigkeit: Aspekte des Totipotenz-Problems. In: Honnefelder L, Streffer C, eds. *Jahrbuch für Wissenschaft und Ethik*, Vol 5. Berlin: de Gruyter, 2000:291–304.
- Denker H-W. Forschung an embryonalen stammzellen: eine diskussion der begriffe totipotenz und pluripotenz. In: Oduncu F, Schroth U, Vossenkuhl W, eds. *Stammzellenforschung und therapeutische Klonen*. Göttingen: Vandenhoeck und Ruprecht, 2002:19–35.
- The President's Council on Bioethics. *Alternative sources of human pluripotent stem cells, A White Paper*. Washington, DC: The President's Council on Bioethics, 2005. <http://www.bioethics.gov> 2005 (accessed 30 May 2006).
- Denker H-W. Early human development: new data raise important embryological and ethical questions relevant for stem cell research. *Naturwissenschaften* 2004;91:1–21.
- Zernicka-Goetz M. First cell fate decisions and spatial patterning in the early mouse embryo. *Semin Cell Dev Biol* 2004;15:563–72.
- Piotrowska-Nitsche K, Perea-Gomez A, Haraguchi S, et al. Four-cell stage mouse blastomeres have different developmental properties. *Development* 2005;132:479–90.
- Deutscher Bundestag. Enquete-Kommission "Ethik und Recht der modernen Medizin" des Deutschen Bundestags. *Nichtöffentliche Anhörung zum Thema "Neue Entwicklungen in der Stammzellforschung/Fragenkatalog"*, 2003. http://www.bundestag.de/parlament/gremien/kommissionen/archiv15/ethik_med/anhörungen/03_12_08_stammzellforschung/index.html (accessed 30 May 2006).
- Beier HM. Definition und grenze der totipotenz: aspekten für die präimplantationsdiagnostik. *Ethik Med* 1999;11:23–37.
- Scholz G, Pohl I, Genschow E, et al. Embryotoxicity screening using embryonic stem cells in vitro: correlation to in vivo teratogenicity. *Cells Tissues Organs* 1999;165:203–11.
- Andrews PW. From teratocarcinomas to embryonic stem cells. *Philos Trans R Soc Lond B Biol Sci* 2002;357:405–17.
- Damjanov I, Solter D. Experimental teratoma. *Curr Top Pathol* 1974;59:69–130.
- Sherman MI, Solter D. *Teratomas and differentiation*. New York: Academic Press, 1975.
- Erdö F, Bührle C, Blunk J, et al. Host-dependent tumorigenesis of embryonic stem cell transplantation in experimental stroke. *J Cereb Blood Flow Metab* 2003;23:780–5.
- Thomson JA, Marshall VS. Primate embryonic stem cells. *Curr Top Dev Biol* 1998;38:133–65.
- Ishikawa T, Nakayama S, Nakagawa T, et al. Characterization of in vitro gutlike organ formed from mouse embryonic stem cells. *Am J Physiol Cell Physiol* 2004;286:C1344–52.
- Denker H-W. Cell lineage, determination and differentiation in earliest developmental stages in mammals. In: Hilscher W, ed. *Problems of the Keimbahn. New work on mammalian germ cell lineage*. Bibliotheca anatomica 24. Basel: S. Karger AG, 1983:22–58.
- Xu R-H, Chen X, Li DS, et al. BMP4 initiates human embryonic stem cell differentiation to trophoblast. *Nat Biotechnol* 2002;20:1261–4.
- Ginis I, Luo Y, Miura T, et al. Differences between human and mouse embryonic stem cells. *Dev Biol* 2004;269:360–80.
- Itskovitz-Eldor J, Schuldiner M, Karsenti D, et al. Differentiation of human embryonic stem cells into embryoid bodies compromising the three embryonic germ layers. *Mol Med* 2000;6:88–95.
- Thomson JA, Kalishman J, Golos TG, et al. Pluripotent cell lines derived from common marmoset (*Callithrix jacchus*) blastocysts. *Biol Reprod* 1996;55:254–9.
- Sasaki E, Hanazawa K, Kurita R, et al. Establishment of novel embryonic stem cell lines derived from the common marmoset (*Callithrix jacchus*). *Stem Cells* 2005;23:1304–13.
- Rohwedel J, Guan K, Wobus AM. Induction of cellular differentiation by retinoic acid in vitro. *Cells Tissues Organs* 1999;165:190–202.
- Enver T, Soneji S, Joshi C, et al. Cellular differentiation hierarchies in normal and culture adapted human embryonic stem cells. *Hum Mol Genet* 2005;14:3129–40.
- Maitra A, Arking DE, Shivapurkar N, et al. Genomic alterations in cultured human embryonic stem cells. *Nat Genet* 2005;37:1099–103.
- Rugg-Gunn PJ, Ferguson-Smith AC, Pedersen RA. Epigenetic status of human embryonic stem cells. *Nat Genet* 2005;37:585–7.
- Pera MF. Scientific considerations relating to the ethics of the use of human embryonic stem cells in research and medicine. *Reprod Fertil Dev* 2001;13:23–9.
- Thomson JA, Kalishman J, Golos TG, et al. Isolation of a primate embryonic stem cell line. *Proc Natl Acad Sci USA* 1995;92:7844–8.
- Behr R, Heneweir C, Viebahn C, et al. Epithelial-mesenchymal transition in colonies of rhesus monkey embryonic stem cells: a model for processes involved in gastrulation. *Stem Cells* 2005;23:805–16.
- Stern C, ed. *Gastrulation. From cells to embryo*. New York: Cold Spring Harbour, 2004.
- Nagy A, Rossant J, Nagy R, et al. Derivation of completely cell culture-derived mice from early-passage embryonic stem cells. *Proc Natl Acad Sci USA* 1993;90:8424–8.
- Schwenk F, Zevnik B, Brünig J, et al. Hybrid embryonic stem cell-derived tetraploid mice show apparently normal morphological, physiological, and neurological characteristics. *Mol Cell Biol* 2003;23:3982–9.
- Schlieter J. Die buddhistische Haltung zum Klonen des Menschen. *Z Religionswiss* 2004;12:43–59.
- Denker H-W. Die Potenz von menschlichen ES-Zellen als Argument gegen ihre Patentierbarkeit. In: Honnefelder L, Streffer C, eds. *Jahrbuch für Wissenschaft und Ethik*, Vol 9. Berlin: de Gruyter, 2004:367–71.

- 37 **Denker U**, Denker H-W. Embryonale Stammzellforschung: Aufklärung notwendig. Problematik der informierten Zustimmung der Spender. *Dtsch Arzteblatt* 2005;**102**:A892-3.
- 38 **Hurlbut WB**. Patenting humans: clones, chimeras, and biological artifacts. *Sci Eng Ethics* 2005;**11**:21-9.
- 39 **Clarke DL**, Johansson CB, Wilbertz J, *et al*. Generalized potential of adult neural stem cells. *Science* 2000;**288**:1660-3.
- 40 **Petrovic S**, Cross M, Müller AM. Differentiation potential of FDCPmix cells following injection into blastocysts. *Cells Tissues Organs* 2004;**178**:78-86.

International Forum on Quality & Safety in Health Care

18-20 April 2007, Palau de Congressos, Barcelona.

Why attend?

- Join over 1000 healthcare professionals from over 40 countries worldwide
 - Learn from experienced leaders and improvement experts
 - Gain new skills and tools for creating change in your organisation
 - Take home practical solutions for improvement methods
- <http://www.quality.bmj.com>

GENETICS

Reproductive cloning, genetic engineering and the autonomy of the child: the moral agent and the open future

M Mameli

J Med Ethics 2007;33:87–93. doi: 10.1136/jme.2006.016634

Some authors have argued that the human use of reproductive cloning and genetic engineering should be prohibited because these biotechnologies would undermine the autonomy of the resulting child. In this paper, two versions of this view are discussed. According to the first version, the autonomy of cloned and genetically engineered people would be undermined because knowledge of the method by which these people have been conceived would make them unable to assume full responsibility for their actions. According to the second version, these biotechnologies would undermine autonomy by violating these people's right to an open future. There is no evidence to show that people conceived through cloning and genetic engineering would inevitably or even in general be unable to assume responsibility for their actions; there is also no evidence for the claim that cloning and genetic engineering would inevitably or even in general rob the child of the possibility to choose from a sufficiently large array of life plans.

most) that these biotechnologies should not be used for reproductive purposes until (through, say, experimentation on non-human animals and other experimental procedures) they become as reliable as other accepted reproductive methods. But some commentators maintain that would-be parents should not be allowed to use cloning and genetic engineering even when these procedures become developmentally safe. In their view, these technologies undermine the autonomy of the resulting child. Many versions of this objection exist and I shall discuss two different versions. According to the first version, the autonomy of cloned and genetically engineered people is undermined because knowledge of the method by which these people have been conceived make them unable to assume full responsibility for their actions.⁶ According to the second version, these biotechnologies undermine the autonomy of those conceived through such methods because they violate what Feinberg⁷ calls their right to an open future.^{8–9} I shall offer reasons to believe that neither of these versions of the autonomy-of-offspring objection succeeds in showing that the human use of cloning and genetic engineering for reproduction should be banned or heavily restricted.

In many countries there are laws prohibiting the use of cloning and genetic engineering as methods of human reproduction. These laws are controversial. Commentators agree that coercive and state-directed uses of these reproductive technologies should be avoided. The controversy is about whether would-be parents should be allowed to use such technologies as tools (among others) for satisfying their reproductive desires.

Whether, when and how to reproduce are among people's most deeply held desires. They often have a central role in a person's self-conception, and the satisfaction or frustration of these desires has an important effect on our views about the quality and meaning of our life. Some authors have argued that we have a right to choose not only whether to have children or not but also when and by which method to have them, and that we should be allowed to use cloning and genetic engineering as reproductive methods if we wish to do so.^{1–4} Other authors claim that the extension of reproductive freedom to the use of these technologies is problematic, as it may interfere with the rights of those conceived through such methods.⁵

One popular argument against the human use of cloning and genetic engineering for reproduction is that these procedures are not "safe" and may result in the birth of children with severe developmental abnormalities. This argument shows (at

Before we start, some terminological and conceptual clarifications are needed. If would-be parents were allowed to use cloning and genetic engineering as reproductive methods, they would be given a tool for choosing the genes of their future children. Cloning allows would-be parents to give their children the same genes as a pre-existing person, whereas genetic engineering allows them to give their children genes that have been intentionally designed, modified or selected in the laboratory for some particular purpose. I shall call those people conceived through cloning or genetic engineering *g-people* (and I shall only talk about people conceived through cloning or genetic engineering as a result of parental choice). I shall call *genetic choices* the choices by which parents can affect their children's genetic endowment.¹ I shall call *environmental choices* those choices by which parents can affect their children's developmental environment. Parents make environmental choices whenever they decide to educate their children according to a certain method, to

¹Cloning and genetic engineering are not the only ways by which would-be parents can make genetic choices. Parents can affect the genetic endowment of their future children simply by choosing a particular reproductive partner rather than another. But obviously cloning and genetic engineering provide a much more direct and precise tool for affecting the genetic endowment of our children.

Correspondence to:
M Mameli, King's College,
Cambridge, CB2 1ST, UK;
gmm32@cam.ac.uk

Received 14 March 2006
Accepted 15 March 2006

make them do certain things and not others, to punish or reward them in certain ways, and so on.

Both genetic and environmental choices affect the phenotype of children, including the psychological phenotype. Every phenotypic trait (henceforth only trait) is the developmental outcome of the interaction between genetic and environmental factors. No trait is entirely genetically determined or entirely environmentally determined. Thus, both interventions affecting a child's genes and interventions affecting a child's environment can make a difference with respect to the child's phenotype. By ensuring that their children experience certain environments, parents can raise the probability that their children acquire certain desired traits. Similarly, by ensuring that their children have certain genes, parents can—at least in principle, assuming that genetic science becomes sufficiently advanced—increase their children's chances of developing certain desired traits. But different developmental factors, whether genetic or environmental, affect development in different ways. This means that in some cases the most reliable and practical way to increase the chances of a trait developing may consist in a specific genetic intervention, whereas in other cases it may consist in a specific environmental intervention, and in still other cases both kinds of interventions may be required.¹⁰

THE MORAL AGENT

One influential version of the autonomy-of-offspring objection to the use of cloning and genetic engineering for human reproductive purposes has been elaborated by Habermas.⁶ He argues that g-people would be unable to conceive of themselves as the “undivided author” (pp 63–67) of their lives and, as a consequence, would be unable to assume full responsibility for their actions. Once informed about the way they were conceived, g-people would inevitably come to believe that the responsibility for their actions falls not on them but on their parents. This belief would undermine the autonomy of the person and his or her status as an “equal member of the moral community” (pp 42, 78).

In Habermas's view, in order to be a full member of the moral community, one must be able to conceive of oneself as full members of the moral community. For this to happen, one must be able to assume full responsibility for one's actions in the same way and to the same extent as other full members of the moral community do. But, according to Habermas,⁶ g-people would inevitably believe that they are not responsible for their actions, at least not in the same way and to the same extent as are those conceived in standard ways. As a consequence, g-people would fail to interact with people conceived through standard reproductive methods “on an egalitarian basis” and would be condemned to “fatalism and resentment” (p 14).¹¹ Many passages in Habermas's book suggest that g-people's belief that they are not fully responsible for their actions would be true: g-people really are less responsible for their actions than are people conceived through standard methods.

The actions of any agent depend partly on the basic psychological makeup of the agent, which includes personality traits. Our genome has an important role in the development of our basic psychological makeup. By actually choosing to have a child with certain genes, the parents of a g-person can exercise an influence on the development of the basic psychological makeup of their child. Does this mean that their child is going to be less responsible for his or her actions than are other

people? No one is fully responsible for his or her psychological makeup. Humans can, when they reach the age at which they are capable of conscious reflection, try to modify their psychological makeup, and sometimes these attempts are successful. At least sometimes, we can change our desires, emotional dispositions, habits, beliefs and even personality traits through conscious effort. This explains why we can in some circumstances be held responsible for cultivating or failing to cultivate our minds in one particular way or another. But people are not responsible for the psychological makeup they find themselves with at the age at which they become capable of conscious reflection. If full responsibility for our action requires that we be fully responsible for our psychological makeup, then obviously no one can be fully responsible for his or her actions. Thus, the fact that g-people are not fully responsible for their psychological makeup cannot be used to argue that they are *less* responsible for their actions than are people conceived through coital means.

Habermas does not endorse the view that people can be fully responsible for their actions only if they are fully responsible for their psychological makeup. Instead, his view seems to be that we can be fully responsible for our actions only if our basic psychological makeup is not the desired outcome of someone else's choice. If some features of a person's psychological makeup result from the random mixing of parental chromosomes—as is the case in humans conceived through coital means—the person's capacity to be morally responsible for his or her actions is not threatened. It is only when some of the fundamental psychological features of a person are the intended result of another person's choice that the threat exists. Thus, if a person behaves in a certain way (partly) because he or she has certain psychological dispositions, and if those dispositions (partly) due to a parental choice of genes designed to bring about those dispositions, then this person is not fully responsible for his or her behaviour. Part of the responsibility for the actions of a person falls on the parents and it does in a way make this person less responsible for his or her actions than are people conceived through standard methods.

The problem with this view is that many of the fundamental psychological features of virtually any person—including those conceived through coital means—are the desired outcome of someone else's choice. In particular, many of the fundamental psychological features of almost everyone are the desired outcome of parental environmental choices. Parents often make environmental choices aimed at influencing and directing their children's psychological development and at raising the probability that their children acquire certain emotional dispositions, desires, values, cognitive skills, personality traits and so on. Such parental efforts are often successful, even though not nearly as often as parents would like. Children often do acquire at least some of the psychological traits that their parents desire to see in them and they acquire these psychological traits partly as a result of their parents wanting their children to develop these traits. For example, a child may acquire an altruistic disposition partly as a result of his or her parents' wanting their child to be an altruistic person.

The fact that the psychological makeup of g-people is partly the desired outcome of parental choices cannot possibly entail that g-people are less morally responsible for their actions than are people conceived through standard methods, as the psychological makeup of standard people is also (usually) partly the desired outcome of parental choices. The only difference is that in the case of g-people the relevant parental choices include genetic choices, whereas in the case of people conceived through standard means they do not. Why should

¹¹Habermas talks mainly about genetically engineered people, but he also says that human clones would be in the same situation as genetically engineered people (pp 62–3).

this difference matter? Habermas argues that the difference is morally important in relation to the violation of autonomy. According to him, environmental choices are “reversible” or “reversible”, whereas genetic choices are not (pp 14, 62–64). Adults or adolescents can—through what Habermas calls a *revisionary learning process* (p 62)—rid themselves of the effects that their parents’ environmental decisions have produced on their minds, or alternatively, they can endorse their parents’ environmental choices. In contrast, g-people cannot rid themselves of the effects that their parents’ genetic choices have had on them: they have no option but to accept such effects and thereby they cannot but see their parents’ genetic choices as an alienating imposition.

Such a picture of psychological development is flawed. Biologists and psychologists have shown that many environmental effects on psychological development are irreversible—and this applies in particular, but not exclusively, to environmental effects that occur in early childhood—and they have shown that many genetic effects on psychological development are reversible.^{11 12} With respect to the reversibility of effects, there is no general asymmetry between genetic and environmental choices. Thus, we can appeal to no such asymmetry to argue that people whose genome has been chosen are less responsible for their actions than those conceived through standard means.

Sometimes Habermas suggests that what really matters in relation to the autonomy of g-people is the moral self-understanding of these people and not whether such self-understanding is accurate: what matters is that g-people would believe that they are not responsible for their actions (p 53).⁴ Even if unjustified, this disavowal of responsibility would undermine their autonomy. It would lead them to see themselves as defective moral agents and would constitute a “pre-natally induced self-devaluation” (p 81), a self-devaluation induced by the parents’ decision to actively choose their children’s genes. Such self-devaluation would make decision-making difficult for g-people and encourage other members of society to treat g-people as less than full moral agents. G-people would be denied (implicitly or explicitly) full membership of the “moral community of equals” and their participation in society would be unjustly restricted. This, says Habermas, is sufficient to show that would-be parents should not be allowed to use genetic engineering and cloning as reproductive methods.

Various replies to arguments of this kind have been elaborated. Some authors have claimed that a person’s false beliefs cannot provide moral grounds for restricting another person’s freedom.¹³ Others have appealed to some form of Parfit’s non-identity principle.^{1 2} There is no room to discuss these proposals here. I want instead to explore what I believe is a better (even though not incompatible) reply. The claim that g-people would inevitably come to believe that they are defective moral agents is wrong, or at least (at this stage) unsupported.

The costs of refusing to take responsibility are very high. As suggested by Habermas himself, the price to pay for the disavowal of responsibility for our actions is the exclusion from full participation in society. Given this, a very strong incentive would exist for g-people to assume full responsibility for their actions and to present themselves to other members of society as full moral agents deserving all the privileges (but also all the duties) of full members of society. In a different (but related) context, Dennett¹⁴ says something relevant:

Aren’t we headed toward a 100 percent ‘medicalized’ society in which nobody is responsible, and everybody is a victim of one unfortunate feature of their background or another (nature or nurture)? No, we are not [...] People want

to be held accountable. The benefits that accrue to one who is a citizen in good standing in a free society are so widely appreciated that there is always a presumption in favor of inclusion. Blame is the price we pay for credit, and we pay it gladly under most circumstances. We pay dearly, accepting punishment and public humiliation for a chance to get back in the game after we have been caught out in some transgression. (p 292)

The benefits resulting from the assumption of full responsibility for our actions are likely to be sufficient to hold the line against what Dennett calls “the spectre of creeping exculpation”. Dennett was not thinking about g-people when he wrote this passage, but it is not difficult to see that what he says applies to g-people too. On this view, g-people would not in general believe that they are defective moral agents. They would not believe this because they would in general be aware of (or they would learn very quickly about) the disadvantages that such belief brings with it.

It is undoubtedly true that, if the human use of cloning and genetic engineering as reproductive methods were to become legal, some g-people would sometimes be tempted to argue that some of their actions—the socially undesirable ones—are not their fault but their parents’ fault. This by itself does not show that would-be parents should not be allowed to choose the genes of their future children. After all, people conceived through standard means are sometimes tempted to disavow responsibility for some of their actions (again, the socially undesirable ones) and to claim that the responsibility for such actions falls on their parents and on their parents’ educational choices. Yet, we do not normally take this as a reason for prohibiting parents in general from choosing how to educate their children.

If the benefits associated with the assumption of full responsibility turned out to be insufficient to hold the line against the spectre of creeping exculpation (or perhaps in this case we should call it *the spectre of creeping self-devaluation*), we could do something about it. We could start teaching people from an early age that some of a person’s traits are the result of his or her parents trying—through genetic or environmental means—to raise the chances of those traits developing and that this does not (at least not by itself) in any way affect the moral status of this person. We could also make sure that people have a good understanding of what they give up—that is, full participation in society—if they disavow responsibility for their actions through the kind of moral self-devaluation described by Habermas. And so on. We could perhaps even argue that if, despite all this, some g-people still chose to self-devalue their moral status, the blame for such self-devaluation would have to be assigned to these people themselves and not to their parents or to the fact that society allows parents to determine the genes of their children.

But what if the kind of moral self-devaluation that Habermas has in mind is similar to certain forms of depression? Some forms of depression cannot be cured or avoided by making people aware of the fact that their being depressed is unjustified and irrational and that there are high costs attached to being depressed. Could not the same be true of habermasian self-devaluation? In some cases, the process leading to the state of depression is (or involves) a reasoning process. In other cases, the depression is due (merely) to organic causes. In the latter cases, it is not possible to avoid the emergence of the depression by making the person realise that it would be irrational or disadvantageous for him or her to become depressed. But habermasian self-devaluation is not due (merely) to organic causes. It is the outcome of a reasoning process: it emerges when a g-person applies an incorrect view of

genes, parental choice and moral agency to himself or herself. Given this, to see whether the analogy is correct, we need to focus only on those cases in which the depression results from a reasoning process.

Consider the following situation: A person starts thinking about her life and after careful consideration she concludes (perhaps correctly, perhaps incorrectly) that she has reasons to believe that her life is going very badly. She adopts the belief that her life is going very badly, this belief makes her depressed and the depression makes her very unlikely to revise the bleak view she has of her life. Once the depression kicks in, telling this person (or even making her realise) that her being depressed is unjustified and irrational has basically no effect on her depression. But as the depression is (partly) the result of a reasoning process, the depression could have been avoided by giving the person reasons to reject the adoption of the belief that her life was going very badly. After all, many people refuse to believe that their life is going very badly (even when they have good evidence for the truth of this belief) and probably (conscious or unconscious) knowledge about the costs attached to being depressed has a role in this.

Let us apply this to habermasian self-devaluation. Perhaps, when people start self-devaluing their moral agency in the way suggested by Habermas, it becomes very difficult for them to stop self-devaluing themselves, and showing them that their self-devaluation is unjustified and irrational has basically no effect on them. This may be the case, even though, at the moment, we have no evidence for it. But let us suppose, for the sake of argument, that habermasian self-devaluation has the effects just described. Even on this supposition, we can still hold the line against the spectre of creeping self-devaluation. We can do this by making sure that g-people in general do not acquire the belief that they are defective moral agents. We can teach them (from an early age) the correct way of thinking about genes, parental choice and moral responsibility, and we can explain to them (from an early age) the disadvantages and the irrationality of moral self-devaluation.

All I have said so far is of course compatible with the claim that would-be parents can in principle use cloning and genetic engineering to make their children unable (when they grow up) to take responsibility for their actions: they could use these biotechnologies in ways that cause their children to actually (and inevitably) develop into defective moral agents. They could choose for their children genes that interfere with the development of the mental abilities required for full-blown intentional action and for moral reasoning. For example, they could choose genes that make their children severely mentally handicapped. Such parents would intentionally make their children disabled. Arguably, their action would constitute an abuse and would have to be punished accordingly. But the (remote) possibility of such misuses does not (by itself) provide support for general restrictions on the reproductive use of genetic engineering and cloning. This is shown by the fact that parents can of course interfere with the cognitive and emotional development of their children through perverse and abusive environmental interventions, interventions that can result in their children becoming defective moral agents. This can happen, for example, in the case of parents who interfere with the development of their children's brain by giving them powerful addictive drugs, by beating them violently or by keeping them as recluses for many years. We do not normally take the relatively rare occurrences of abuses of this sort as a reason to ban parents in general from choosing how to bring up their children. Similarly, we should not take the remote possibility that some parents may misuse cloning and genetic engineering in the ways described as a reason to ban the reproductive use of these technologies.

THE OPEN FUTURE

In this section, I want to discuss another version of the autonomy-of-offspring objection. This version appeals to what Feinberg⁷ calls "the right to an open future" and has been elaborated by various authors. For example, Davis⁸ claims that reproductive cloning violates the child's right to an open future, especially in cases where the child is brought to life with the explicit intention of creating someone who resembles as much as possible a pre-existing person. Buchanan *et al*⁹ argue that reproductive genetic engineering can, in some circumstances, infringe a child's right to an open future and that this fact should seriously be taken into account when deciding whether to ban this reproductive technology.

What is the right to an open future? It is not easy to extract a single definition from Feinberg's original article. Buchanan *et al* suggest that the best way to make sense of Feinberg's notion is as follows:

The idea is that parents have a responsibility to help their children during their growth to adulthood to develop capacities for practical judgement and autonomous choice, and to develop as well at least a reasonable range of the skills and capacities necessary to provide them the choice of a reasonable array of different life plans available to members of their society. [...] In this view, it would be wrong for parents to close off most opportunities that would otherwise be available to their children in order to impose their own particular conception of the good life. (p 170)⁹

Feinberg's original article is about parents' environmental rather than genetic choices.⁷ The case discussed is the one of *Wisconsin v Yoder*. In the early 1970s, parents belonging to the Amish community asked to be allowed to withdraw their children from school at the age of 14 years, 2 years before the age at which any child can withdraw from school on his or her own. They argued that schooling beyond age 14 is not necessary for the Amish way of life and interferes with Amish children acquiring the skills and motivation needed to become an integrated member of the Amish community. The Wisconsin Supreme Court accepted their request. Feinberg argues that, had the Amish asked to withdraw their children from school 4 or 6 years before the age at which other children can withdraw, their request would have been illegitimate. An Amish child who undergoes 4 or 6 fewer years of schooling than is required by non-Amish children would almost certainly end up being unfit for any way of life other than the Amish one. The child would not develop the skills necessary to pursue life projects different from those that can be pursued as a member of the Amish community. Because of competition with other members of society, this person would not have any real chance of pursuing non-Amish life projects with some probability of success. Thus, this educational choice would rob this person of the possibility of choosing from a "reasonable array of life plans".

According to Buchanan *et al*,⁹ the principle that parents should not be allowed to make choices resulting in their children not having a reasonable array of life plans from which to choose should be applied to both environmental and genetic choices. Thus, a genetic intervention that makes a child particularly fit to pursue a career as, say, a pianist but unfit to pursue any other (available) career, would be illegitimate, especially in contemporary Western societies where a relatively large range of choices is usually available to most people. Genetic interventions that make children fit for only a restricted range of ways of life violate the right to an open future and should thereby be banned.

The ability to choose our own life plan is arguably one of the essential conditions of the good life. What does this ability require? People must have cognitive and emotional skills that make them able to (a) compare (consciously or unconsciously) different life plans, (b) select one among those life plans they are able to consider, (c) transform this choice into the intention to behave in accordance with the chosen plan and (d) transform this intention into behaviour that actually conforms to the chosen option. Moreover, people must have skills that allow them to pursue different life plans with some definite chance of success, and they must be in a social context where these different life plans can actually be pursued. If people have skills that make them fit for one and only one particular and very specific life plan, they cannot be said to actually be able to choose their own life plan. Despite their decision-making abilities being normal, they have (in some sense) no choice. Similarly, if people live in a despotic society where they are allowed to pursue only one kind of career, they are obviously not free to choose their life plan.

Parents inevitably exert an important influence on the array of life plans available to their children. In many cases, this influence results in children having a larger array of life plans from which to choose than they would otherwise have had. In other cases, the influence results in children having a smaller array of life plans from which to choose than they would otherwise have had. Making someone fit for a particular life plan often (but not always) results in making the same person less fit for other life plans. Many parents make environmental choices aimed at increasing their children's chances of succeeding in the pursuit of more or less specific life plans. By doing so, they often make their children less likely to succeed in the pursuit of other (alternative) life plans and, in this sense, they may reduce the range of life plans available to their children. Yet this sort of parental behaviour is in most cases considered legitimate, and some see it as an inevitable ingredient of being a good parent. If the practice is legitimate in the case of (most) parental environmental choices, why should it not be legitimate in the case of (most) parental genetic choices? Parents are currently allowed to adopt relatively severe educational methods aimed at, for example, transforming their children into successful tennis players or into successful law school graduates. Given this, why should they not be allowed to use genetic methods to achieve similar results?

The discussion about the legitimacy of the Amish parents' request suggests that there is a moral limit to the extent to which parents can be allowed to reduce the array of life plans available to their children. If some environmental choices (eg, not sending a child to school) reduce the range of life plans available to a child below a certain threshold, then those choices can be said to violate the child's autonomy and are thereby illegitimate. Exactly the same applies to genetic choices. But what is the minimum size of a "reasonable array of life plans"? What is the threshold that parental choices—be they genetic or environmental—should never trespass? This is a difficult question and there is no room here for dealing with it properly. The correct answer to this question depends on many different factors. Buchanan *et al.*,⁹ for example, argue that the answer depends, among other things, on what the correct theory of justice is.

Despite the question being a difficult one, we can examine current practice for some suggestions about how to think about this issue. For example, we may notice that there exist relatively large disparities in the range of life plans available to different members of society. Some of these disparities are due to unjust social arrangements, but arguably some of them are not. Rich people usually have more opportunities than poor people, and at least some of these differences in opportunity are usually not

considered to be the result of unjust social arrangements. Yet it seems wrong to claim that, except perhaps in cases of extreme poverty, poor members of society violate their children's right to an open future when they decide to give birth to a child and not to give up their child for adoption to rich members of society. This suggests that if our current practices in this domain are correct, the morally permissible minimum size of a "reasonable array of life plans"—the size below which the child's right to an open future is violated—is relatively small and poor parents do not in general trespass the critical threshold.

Another consideration is that cloning and genetic engineering would probably not be used to reduce the array of life plans available to a child below the morally permissible threshold. Let us consider cloning first. In so far as the life plans available to children depend on their physical and mental abilities (rather than on factors extrinsic to the child, eg, the wealth of the parents or the structure of society) and in so far as such physical and mental abilities depend on the children's genome (rather than on their developmental environment), the array of life plans available to a cloned child is similar to the array of life plans available to the person from whom the child's genome is derived. Thus, unless the parents select for their child the genome of someone who, because of his or her genes, did not have a decent minimum number of different life plans from which to choose, the parental decision to conceive a child by cloning cannot (in general) interfere with the child's chances to have a reasonable array of life plans at his or her disposal. In fact, if the parents decide to create a child by cloning someone who had many options and opportunities in life, their choice will (in general) positively contribute to the range of life plans available to the child.

What about genetic engineering? Many would-be parents are likely to want to use genetic engineering to increase the probability that their children develop traits—such as high intelligence—which would make the children more likely to succeed in a whole range of different life plans. Such genetic choices would in general enlarge rather than reduce the array of life plans available to the future child. But some parents may want to use genetic engineering to increase the chances of their child becoming fit for a very specific life plan. In many cases, such genetic choices would reduce the range of life plans available to a child to the same extent as currently accepted environmental choices (such as the decision to make a child play a lot of tennis). In other cases, the genetic choices would reduce the range to the same extent as environmental choices that are currently considered illegitimate (such as the decision not to send a child to school at all). In so far as we can make sure that cases of the second kind are relatively rare, the possible occurrence of these cases cannot be used as a reason to ban the reproductive use of genetic engineering.

Parents can in principle use cloning and genetic engineering to make their children unable to choose their life plan. They could choose for their children genes that interfere with the normal development of the cognitive and emotional abilities required to compare and select life plans or they could choose for their children genes that are likely to make them fit only for a very specific life plan. It is for these reasons that, as in the case of parental environmental choices, parental genetic choices should be regulated and constrained. But they should be regulated and constrained in ways that are similar to the way in which environmental choices are regulated.

Another interpretation of the open-future objection needs to be discussed. Some commentators think that the array of life plans available to people depends not only on their skills and sociophysical context but also on the way with conceive of themselves and of the options available to them. According to these authors, cloned people who know what kind of life was

lived by a pre-existing genetic twin (and what kind of choices the twin made) would feel that their destiny has already been written, that they are condemned to make choices that are similar to those of the twin, and that they are not really free to choose their own life plan. This feeling of pre-determination would be amplified by the interactions between the cloned person and other people. The parents in particular would have expectations about their child, expectations based on what they know about the pre-existing twin. Such expectations would exert a powerful psychological pressure on the cloned person and would heavily restrict the array of life plans effectively available to him or her. The cloned person would be condemned to live “a life in the shadow” of the pre-existing twin.^{8 15–17} Some commentators have extended this argument to the case of genetically engineered people. In their view, genetically engineered people who know that their parents chose for them genes designed to bring about, say, a preference for a particular kind of career would feel heavily constrained in the kind of choices they can make, and parental expectations would amplify this feeling.¹⁸

As in one version of Habermas’s objection to the human use of cloning and genetic engineering for reproduction, on this version of the open-future objection the threat to the autonomy of g-people is mainly due to the way g-people are supposed to conceive of themselves. My reply in this case is similar to my reply to Habermas. There is no good evidence for the claim that cloned people would inevitably or even in general see themselves as doomed to repeat the choices of their pre-existing twins. Because of the disadvantages associated with the feeling of having one’s destiny already written, it seems likely that they would often rebel against the thought that they have to approach life in the same way as their pre-existing twins. Perhaps they would try to differentiate themselves as much as possible from their pre-existing twins. Moreover, they would probably learn very quickly—by experimenting with their lives, by observing the behaviour of other clones or by reading about standard monozygotic twins—that they can make choices that differ considerably from those of their pre-existing twins. We could also start teaching people from an early age that the fact that two people have the same genes does not imply that they are destined to live similar lives. We could in this way hold the line against the feeling of pre-determination and all the bad consequences that such feeling produces on one’s options in life. Similar considerations apply, *mutatis mutandis*, to the case of genetically engineered people.

What about parental expectations? Would g-peoples’ right to an open future be infringed by such expectations? No good evidence supports this claim either. Parental expectations often have an important and positive role in child development, even though they can occasionally harm a child and unjustly constrain his or her (future) freedom of choice. Arguably, this would apply to g-people in the same way that it applies to people conceived through standard methods. G-people would, when they reach maturity, be able to rebel against the expectations of their parents, or to endorse them if they wish to do so, and arguably they would be able to do this to the same extent as other people.

It should also be noticed that we currently accept very strong and pressing parental expectations as legitimate. Consider the example of the firstborn royal child, who has to cope not only with the expectations of the parents but also with the expectations of a whole nation and beyond: everybody expects the child to take the throne when the right moment comes.² We do not usually see these expectations as a reason to prohibit kings and queens from having children. This suggests that we do not usually see such expectations as infringing on the royal child’s right to an open future. If we do not want to revise our

judgement in this case, we should not see the expectations of the parents of g-people—which in general would probably be less pressing than those concerning the royal child—as infringing on g-people’s right to an open future either.

CONCLUSIONS

Some authors have argued that the human use of reproductive cloning and genetic engineering should be prohibited because these biotechnologies undermine the autonomy of the resulting child. In this paper, I have considered two versions of this objection. I have argued that there is no evidence that people conceived through cloning and genetic engineering would inevitably or even in general be unable to assume responsibility for their actions. And I have argued that there is no evidence that cloning and genetic engineering would inevitably or even in general rob the child of the possibility to choose from a sufficiently large array of life plans.

Some would-be parents may use cloning and genetic engineering in ways that violate the autonomy of their future child and, more generally, in ways that constitute abuse. But there seem to be no asymmetry between parental genetic choices and parental environmental choices with respect to the ways, the circumstances and, arguably, the frequency with which these choices would be used to perpetrate abuse. Thus, no such asymmetry can be appealed to in arguing that the restrictions on parental genetic choices (and on the biotechnologies that make such choices possible) should be much more severe than current restrictions on parental environmental choices. From a legislative viewpoint, genetic choices and environmental choices should be treated in similar ways.

Many issues remain unresolved. One issue concerns the best ways to avoid parents from using cloning and genetic engineering to perpetrate abuse. We also need to establish how to distinguish in a principled way between genetic interventions that constitute abuse and genetic interventions that do not. These issues are important, but they should be seen as special cases of general questions about the permissibility of producing certain kinds of effects on children, whether through genetic interventions or through environmental interventions. The fact that a given intervention affects a child’s genome rather than his or her environment does not make that intervention more likely to constitute abuse. And the fact that an abuse has been perpetrated by a choice of genes does not make the abuse worse or its effects more irreversible than if it had been perpetrated through an intervention on the child’s developmental environment.

We need to promote healthy and well-balanced relationships between parents and children and to reduce the risk of parental abuse, whether it is perpetrated by old means or by new technologies. A general ban on reproductive cloning and genetic engineering reduces the risk of these biotechnologies being used to perpetrate abuse, but it does so in a far-from-optimal and unjust way, by denying the use of these biotechnologies to many people who would use them in non-abusive ways and to satisfy some of their most fundamental desires.

ACKNOWLEDGEMENTS

I thank Lisa Bortolotti, John Harris and Tim Lewens for comments on previous versions of this article.

Competing interests: None.

REFERENCES

- 1 Harris J. *Clones, genes and immortality*. Oxford: Oxford University Press, 1998.
- 2 Harris J. *On cloning*. London: Routledge, 2004.
- 3 Agar N. *Liberal eugenics*. Oxford, UK: Blackwell, 2004.
- 4 Dworkin R. *Sovereign virtue*. Cambridge: Harvard University Press, 2000.
- 5 O’Neill O. *Autonomy and trust in bioethics*. Cambridge: Cambridge University Press, 2002.

- 6 **Habermas J.** *The future of human nature*. Cambridge, UK: Polity, 2003.
- 7 **Feinberg J.** The child's right to an open future. In: Aiken W, La Fallette H, eds. *Whose child? Children's rights, parental authority and state power*. Totowa, NJ: Littlefield, 1980.
- 8 **Davis DS.** *Genetic Dilemmas*. New York: Routledge, 2001.
- 9 **Buchanan A, Brock D, Daniels N, et al.** *From chance to choice*. Cambridge: Cambridge University Press, 1999.
- 10 **Mameli M.** The inheritance of features. *Biol Philos* 2005;**20**:365–99.
- 11 **Bateson P, Martin P.** *Design for a life*. London: Jonathan Cape, 1999.
- 12 **Marcus G.** *The birth of the mind*. New York: Basic Books, 2004.
- 13 **Rock D.** Cloning human beings: an assessment of the ethical issues pro and con. In: Nussbaum MC, Sunstein CR, eds. *Clones and Clones*. New York: Norton, 1998.
- 14 **Dennett D.** *Freedom evolves*. New York: Viking, 2003.
- 15 **Holm S.** A life in the shadow: one reason why we should not clone humans. *Camb Q Healthc Ethics* 1998;**7**:160–2.
- 16 **Jonas H.** Biological engineering—a preview. In: Jonas H, eds. *Philosophical essays: from ancient creed to technological man*. Englewood Cliffs, NJ: Prentice Hall, 1974.
- 17 **Report of the President's Council of Bioethics.** *Human cloning and human dignity*, 2002.<http://www.bioethics.gov/reports/cloningreport/index.html> (accessed 12 Jun 2006).
- 18 **Report of the President's Council of Bioethics.** *Beyond therapy: biotechnology and the pursuit of happiness*, 2003.<http://www.bioethics.gov/reports/beyondtherapy/index.html> (accessed 12 Jun 2006).

CORRECTION

doi: 10.1136/jme.2005.14738corr1

Several errors occurred in the paper titled, Potential of embryonic stem cells: an ethical problem even with alternative stem cell sources (*J Med Ethics*; **32**:665–71). A fully corrected pdf is available online at <http://jme.bmj.com/>. The journal apologises for these errors.